

UDCS Consulting Project Summary

THE COMPANY

UDCS Consulting provides

- survey and
- engineering consultancy services

to the

- electricity
- infrastructure
- mining
- commercial sectors

The primary works being undertaken are in reticulation, distribution and transmission of power, water and gas.

Our Clients

Domestic and foreign Utilities
Major construction companies
Government & Private asset owners.

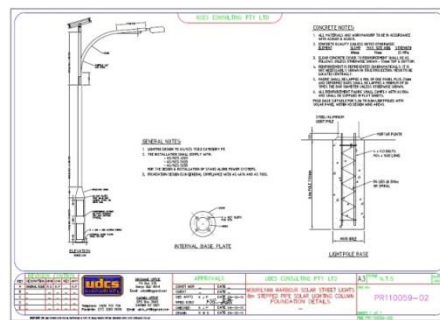
Services Offered

Engineering Survey
Electrical Distribution Design
Sub-transmission OH Design
Sub-transmission UG Design
Substation Design
Preparation of environmental reviews
Developer initiated Design
Solar Power and Lighting Design
Road Lighting Design
HV Auditing (QLD ESO)

Contact Details

Ph (07) 3260 6009
Mob 0439 703 709
PO Box 235
Banyo QLD 4014

Solar Road Lighting - Stand Alone Mourilyan Harbour



Project Scope

Solar Queensland engaged UDCS Consulting to provide design and construction services for a stand-alone solar PV street lighting system for a project with TMR Queensland and the Mourilyan Harbour Port Authority.

The project consisted of the design and installation of a six pole system suitable to provide P category lighting in the car park and boat ramp area of the port.



Key Personal

Client: TMR & Port Authority
Consulting Engineers: Kerry Prickett
Stephen Edwards
Construction Manager: Mick Smith

Our Involvement

UDCS Consulting were involved in both the design and construction with our sister company D.C.E Solutions performing the civil installation role in the construction process.

The project included:

- Design of the battery bank to prove supply as per the specification and size limitation due to the space and lifting requirements.
- Design and construction of IP56 housings for the MPPT controller as per Solar Queensland's request.
- Design and construction of the stand-alone PV system protection and isolation mechanisms.
- Design and commissioning of the street lighting columns complete with mountings and secure access for the Solar PV module, controller, protection and isolation, batteries and labeling.

Project Outcomes

Following commencement of construction all columns were stood, wired and commissioned within 48 hrs.

The PV system design was in line with AS/NZS4777 and the Clean Energy Council Design guidelines. All wiring and cabling was designed as per AS/NZS 3000 and AS/NZS 3008.

UDCS Consulting

PS 0013